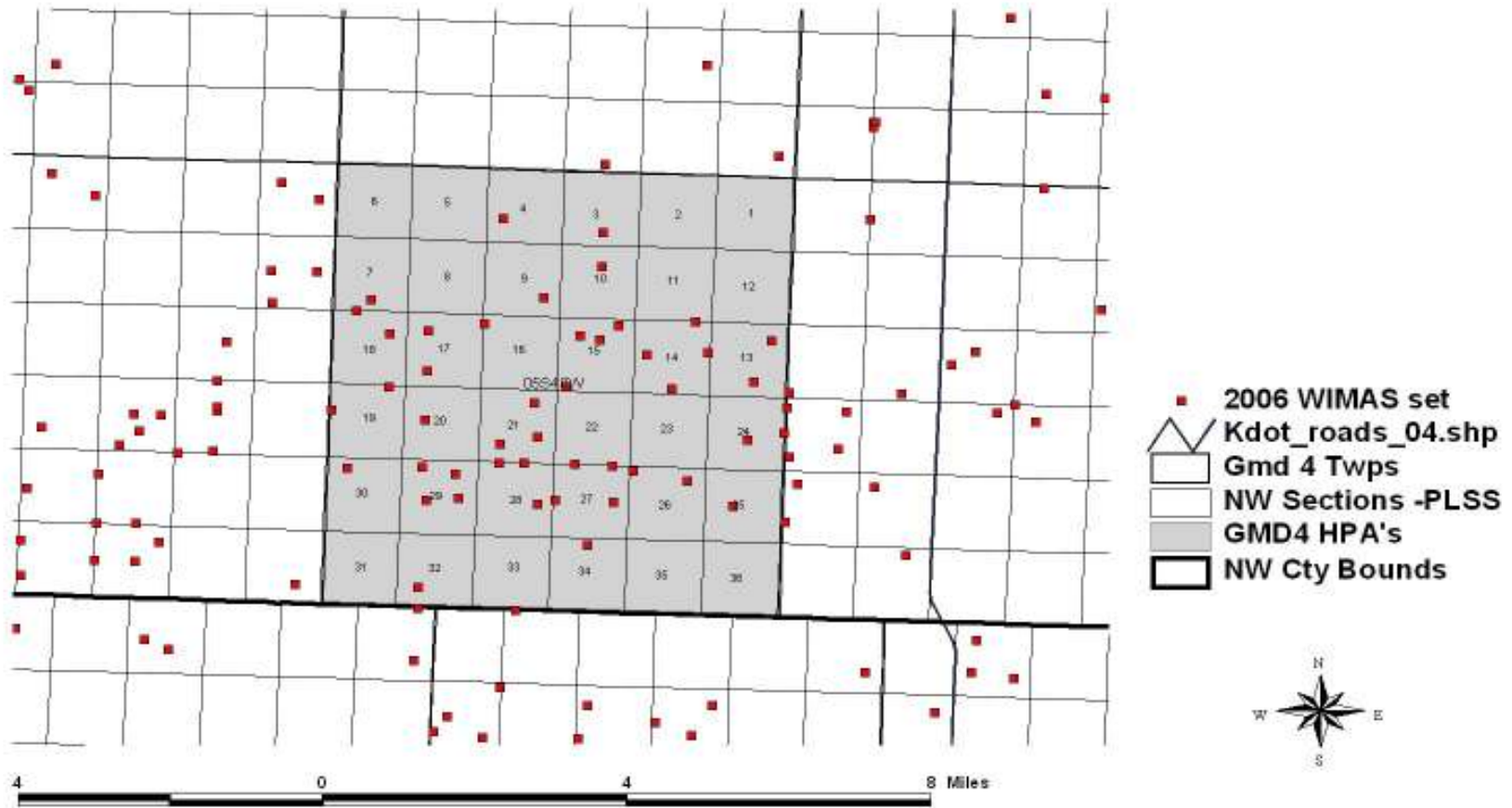
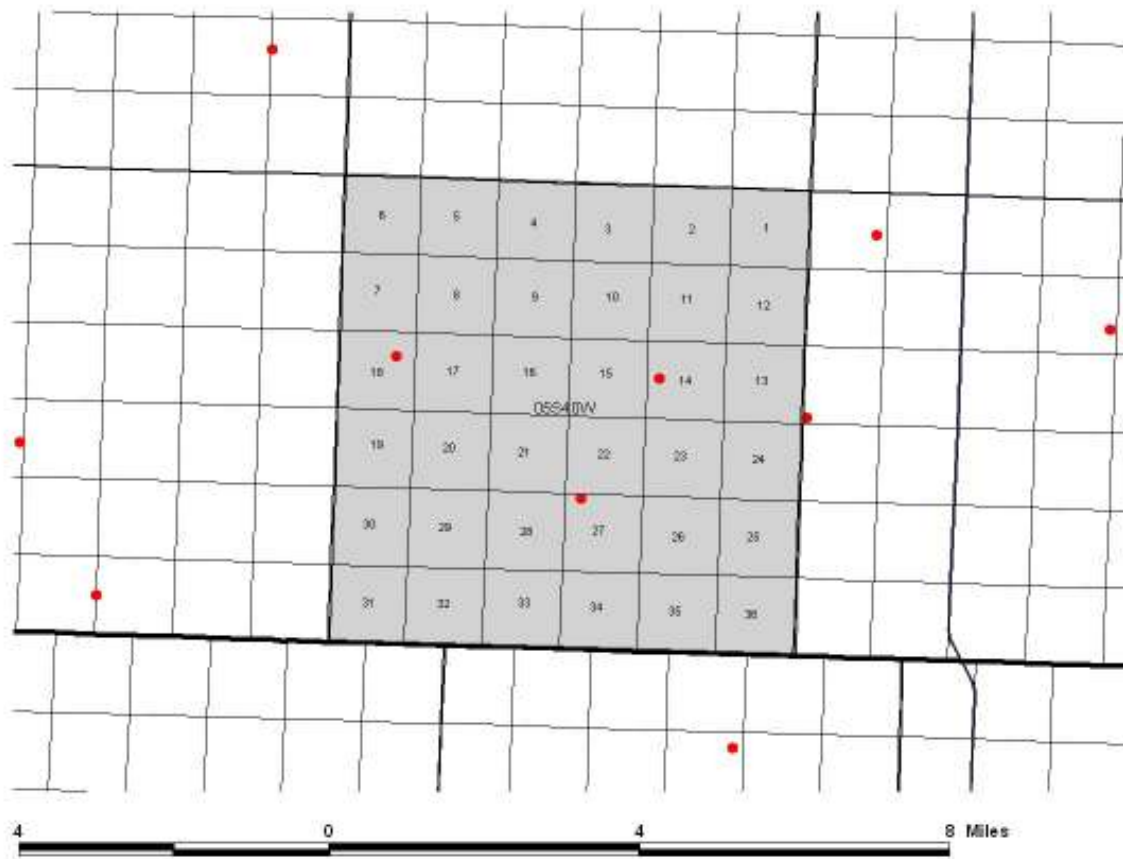



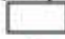

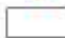


# CN-3 Authorized Wells



45 Wells; 36 Sections; 23,0404 Acres; 15,100 AF Appropriated; ~6,000 AF/Yr Pumped

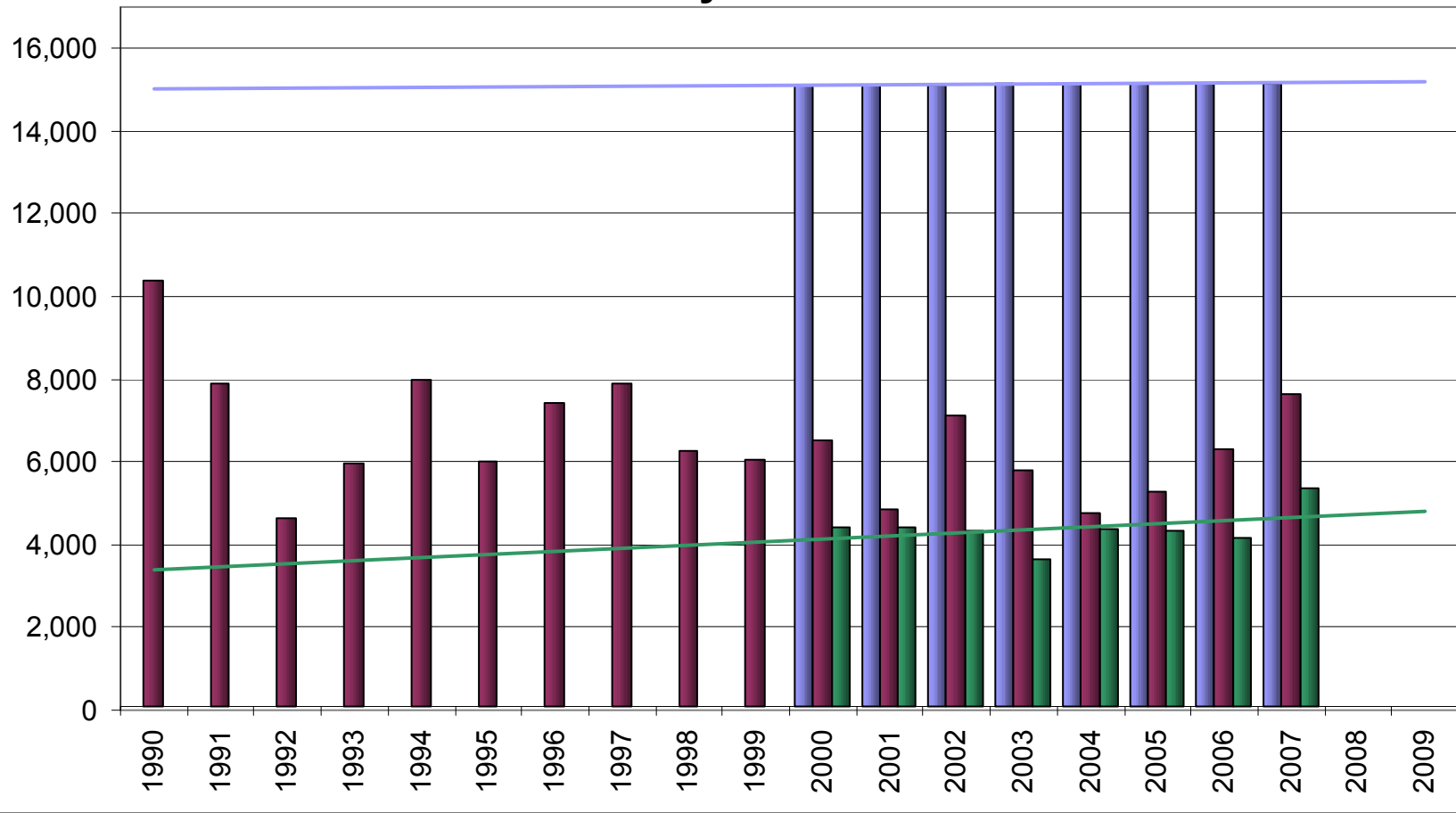
# CN-3 HPA with Observation Wells



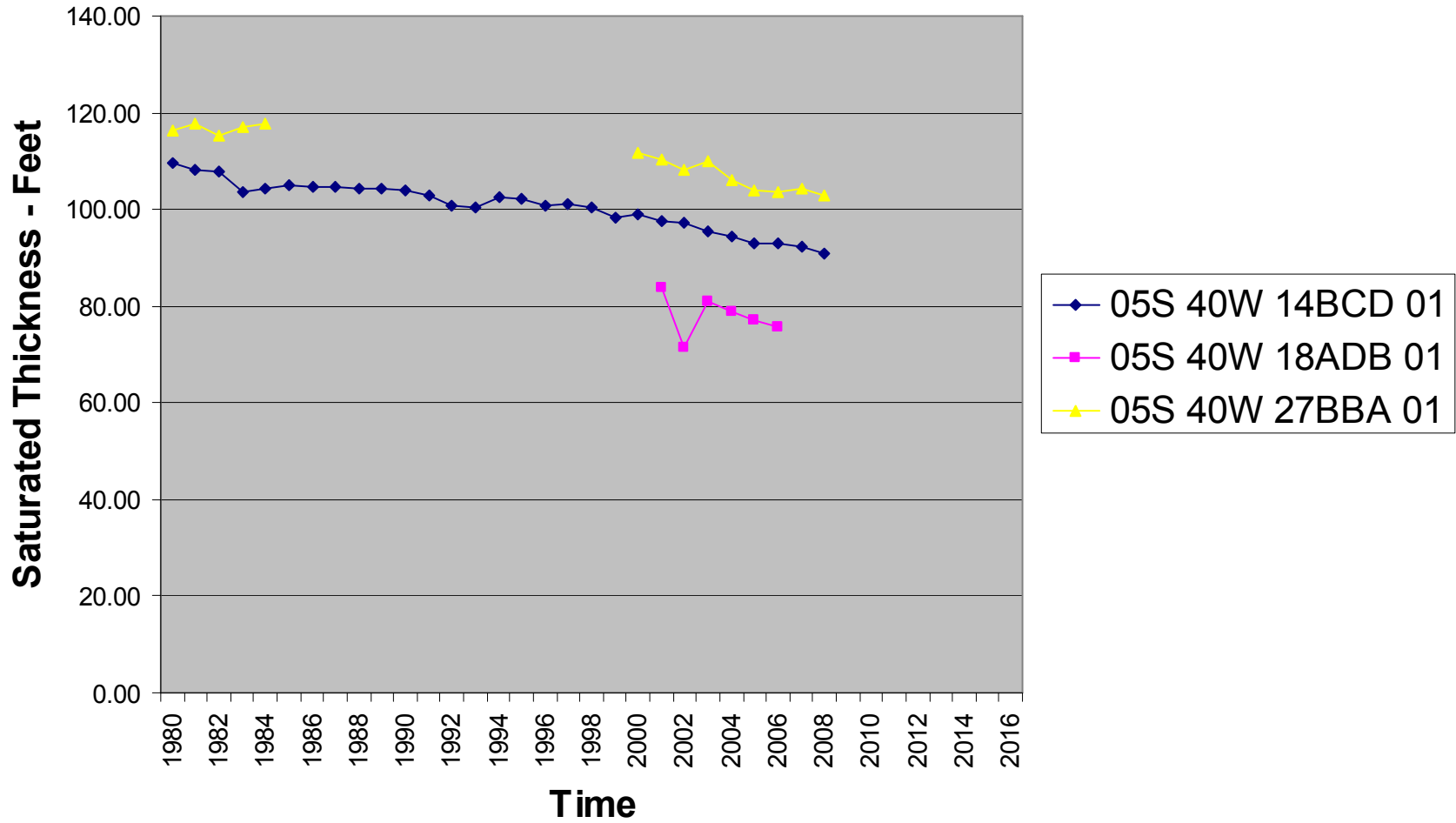
-  Kdot\_roads\_04.shp
-  Gmd 4 Twps
-  Obsmstr-ST
-  NW Sections -PLSS
-  GMD4 HPA's
-  NW Cty Bounds



**Acft**    **CN 3 Area Appropriated AF & Pumped AF & Ac Irrigated**  
**by Year**



# CN-3 OBS Wells - Changes in Saturated Thickness



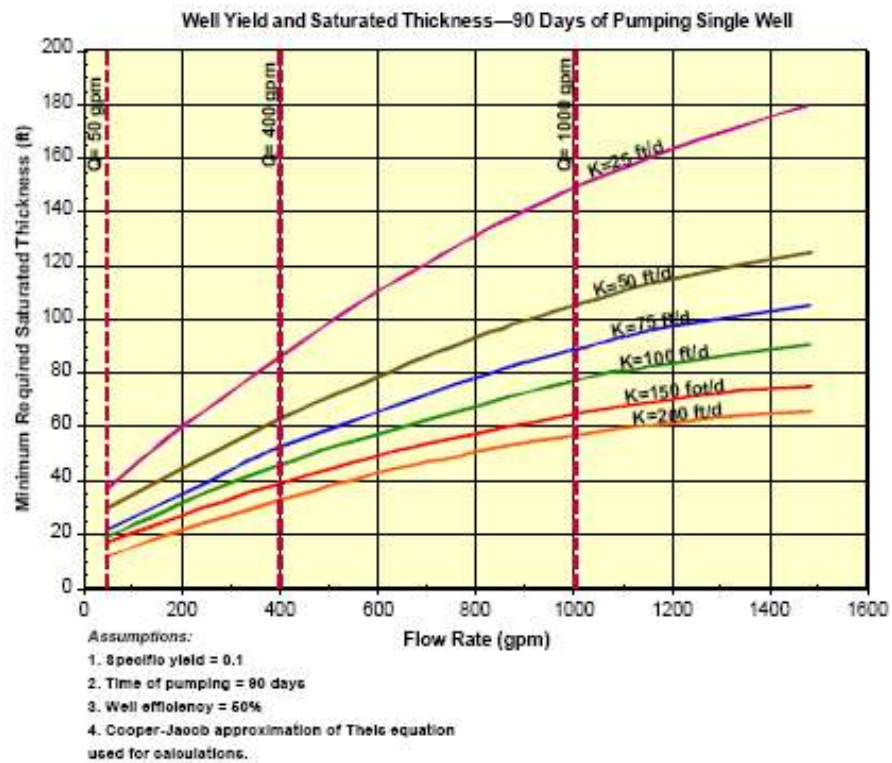
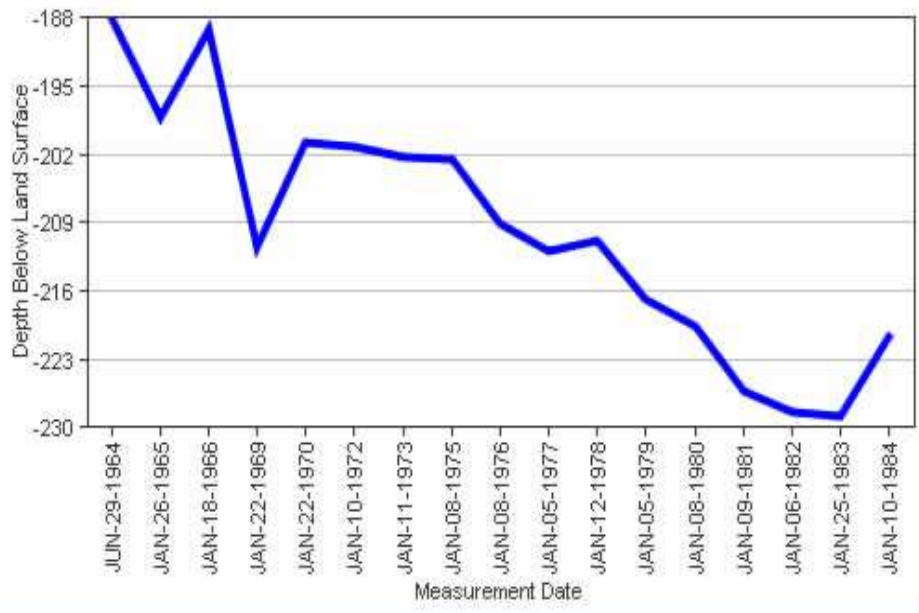


Figure 4. Relationship between Well Yield and Saturated Thickness for Various Hydraulic Conductivity Values, 90 Days of Pumping Single Well



**05S 40W 04CBD 01**



**05S 40W 15ACB 01**