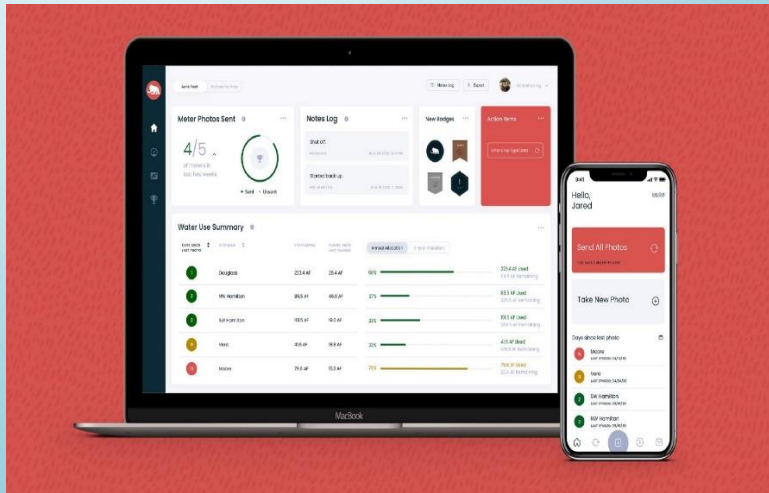


# The Water Table



The new TAPP H2O app for your smartphone or tablet has been a huge success as a water budgeting tool! They have now incorporated an online dashboard with more data! Errors on submitted water use reports, malfunctioning meters, and water budgeting questions have been flagged by using the app and allowing the errors to be resolved before they become a problem affecting water rights.

Users can easily see how much water has been pumped on their annual allocation as well as how much they have left in their LEMA account. GMD 4, nor does the Division of Water Resources, receive the data entered into the app unless it is provided to us by the TAPP H2O user; making your data private to you until you authorize another user.

Please visit [www.gmd4.org](http://www.gmd4.org) and watch the short video or call the office at 785-462-3915 to inquire about how to manage your annual allocation and LEMA water account with the app.

## Contents

### Special Interest Articles

TAPP H2O 1

Welcome New Board  
Member Jerry Binning 2

GMD 4 LEMA Update 2

Water Table Data 3

Certified Irrigator Program 3

### Individual Highlights

Dan's Field Notes 2

Pumping the Tailwater 3



## Welcome New Board Member Jerry Binning

During the 46<sup>th</sup> Annual Board Meeting Jerry Benning of McDonald was elected to the GMD 4 board of directors. He holds the Rawlins/Decatur County position. Jerry has previous experience as a board member serving from 1991-1996. We welcome back his

knowledge and love of agriculture and willingness to learn more as he contributes his experiences to the decision-making process. So, with that, welcome Jerry back to the board of directors and we look forward to his time serving on the board!

---

*“TAPPH2O saved me from a lot of hassle when my meter went down. It alerted me and I was able to get it fixed without having to provide backup records” ~ GMD 4 Producer*

---

### Dan's Field Notes

For those water rights affected by the GMD 4 LEMA you will have additional metering requirements and **required to record your meter reading every two weeks**. It will be required that you have an alternate way to meter your water usage. Some of those acceptable ways are:

- TAPP H2O App
- AgSense
- Pivot hours
- Electric hours
- Dated Pictures
- Log Book
- Pressure sensors
- Additional meter

## GMD 4 LEMA UPDATE

Later on this season, the Division of Water Resources will be sending out letters showing how much water is remaining in your LEMA account for 2021 & 2022 use. It is **VERY** important you pay attention to this quantity as the penalties for overpumping the LEMA are stiff. If you overpump less than 4 acre-feet then the fine is \$1000 per day. If you pump more than 4 acre-feet then the fine is not only \$1000 per day but also an automatic **TWO-YEAR SUSPENSION!** You will not be allowed to irrigate for two years. You can get online at <https://connect.kda.ks.gov/apps/DWRLEma/Gmd4/Irrigation> to check what is left in your LEMA account or call the GMD 4 office to inquire. Make sure those meters are working properly to assure your quantities are accurate. Anyone caught tampering with their meter will be suspended for 5-years.

## **Water Table Data**

The Kansas Geological Survey conducted its annual well measurements in January. Overall GMD 4 saw an average decline of 0.75 feet. With the extreme dry conditions in most of the district this is not a surprise. In 2017 – 2019 we had a rise each year in the water table. An average decline of 0.93 feet was seen across the entire network of well measurements within the High Plains Aquifer. We had one of the lowest decline rates throughout the network so keep up the great work with your improved farm management in times of drought!

## **Certified Irrigator Program**

This spring we will begin filming videos to bring demonstrations of water-saving technology and management to your smartphone or PC! It is the goal to have the program available this time next year. It will consist of several modules with videos to view and reflective questions to answer. We are partnering up with NWKTC Graphic Arts and Precision Ag department to not only provide you access to the videos but for some of the videos and expertise they provide. If you, or someone you know, utilizes water-saving technology please contact Shannon Kenyon at the GMD 4 office as we are looking for a variety of boots-on-the-ground producers who are utilizing water-saving technology and management tools.



### **Pumping the Tailwater** Shannon Kenyon

As we begin 2021 with the fourth year of the LEMA, it is critical for irrigators to know exactly how much they have pumped and how much they have left in their LEMA accounts. I cannot stress this enough as I do not want to see anyone imposed with the stiff penalties for not doing their due-diligence. A water-right is a right to use the water owned by the State of Kansas. Suspension of that right can be economically detrimental to a producer if it comes as a penalty for simply not paying attention. If troubles arise in 2021 please contact me immediately so we can create a plan before going into the final year of 2022. Also, as we begin talks of renewing the LEMA, I strongly encourage any ideas or concerns you may have be communicated to either myself, GMD 4 staff, and/or board members.

NWKS GMD4  
1290 W 4<sup>TH</sup> ST  
PO BOX 905  
COLBY KS 67701

Non-Profit  
U.S. Postage  
PAID  
Permit #12  
67701  
Colby, KS

**ADDRESS SERVICE REQUESTED**

Assisted by RSVP

## Important Dates

**Monthly Board Meetings – First Wednesday of every month @ 9 am.  
(Except February & December)**

**April Board Meeting: April 7th**

**May Board Meeting : May 5th**

**June Board Meeting: June 2nd**

***Meetings are subject to change depending on weather, planting, & harvest!  
Please visit [www.gmd4.org](http://www.gmd4.org) as well as our Facebook and Twitter page for  
meeting information and changes.***

## Staff and Board of Directors

- Shannon Kenyon – Manager [skenyon@gmd4.org](mailto:skenyon@gmd4.org)
  - Dan Simmering – Field Technician [dee@gmd4.org](mailto:dee@gmd4.org)
  - Jody McCain – Administrative Assistant [jmccain@gmd4.org](mailto:jmccain@gmd4.org)
- |                              |                 |                 |
|------------------------------|-----------------|-----------------|
| Brett Oelke – President      | Karen Flanagin  | Dylan Loyd      |
| Nathan Emig – Vice President | Ted Nighswonger | Jerry Binning   |
| Jeff Deeds – Secretary       | Shane Mann      | Marsha Shilling |
| Lynn Goossen – Treasurer     | Brent Rogers    |                 |

NW KS GMD 4  
1290 W 4th  
PO Box 905  
Coby, KS 67701

785-462-3915  
Fax: 785-462-2693

*Like us on Facebook and Twitter!*

Find us on the Web:  
[www.gmd4.org](http://www.gmd4.org)

